

JOIN THE

# ENGLISH FOR ACADEMIC PURPOSES (EAP) PROGRAM

The English for Academic Purposes program is an intensive English program that not only helps students to meet the English Language Proficiency (ELP) Requirement of the University of Lethbridge, but also provides students with the skills necessary to succeed in an academic English environment. EAP is offered at our Lethbridge campus only.

JANUARY, MAY OR SEPTEMBER

## START DATES

ESTIMATED TUITION & FEES  
2024/2025 COST PER SEMESTER  
(NEW STUDENT) **\$4,714**

(application fee, placement test, and semester-long bus pass is included)

**\$250**

ESTIMATED  
TEXTBOOKS  
& SUPPLIES

**ADDITIONAL  
HEALTH &  
DENTAL PLAN  
REQUIRED**

NOT INCLUDED IN  
TUITION AND FEES)



For more info scan the QR code or contact [eli@uleth.ca](mailto:eli@uleth.ca)



Scan the QR code to see what students are saying about the EAP program.

## HOW TO APPLY TO EAP

### Option 1: I only want to complete EAP

1. Fill out the PDF application form and submit it to [admissions@uleth.ca](mailto:admissions@uleth.ca)
2. Pay non-refundable application fee of \$125
3. Receive Offer of Admission
4. Pay non-refundable tuition deposit (\$500)
5. Receive a Letter of Acceptance for EAP

### Option 2: I want to use EAP to meet the English requirement for an Undergraduate or Graduate Program (except Faculty of Health Sciences programs)

1. First apply to an undergraduate or graduate program, see steps on page 17
2. Receive an admission decision for your undergraduate or graduate program
3. If you meet the academic requirements of your program, apply to EAP by following the steps in Option 1

### Junior English Summer Camp:

Experience a Canadian university in this fun-filled camp for international high school students. Enjoy both soccer and university S.T.E.M. (Science Technology Engineering and Mathematics) with likeminded students from all over the world.

**Approximate length: 10 days.**

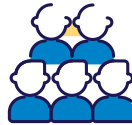
## EAP Students Can Expect:



Face-to-face classes



In-depth step-by-step instruction



Small class sizes



Highly skilled & certified instructors



World-class university facilities



Helpful & experienced student services team



Motivated students from all over the world



Domestic student mentors



ELI activities calendar and social events



Access to homestay program



Access to on-campus housing options



Letter of completion



# ENGLISH LANGUAGE PROFICIENCY (ELP)

"The step-by-step guidance I received has made me confident in my academic English abilities."

**OSCAR CHAN** EAP GRADUATE



EAP LEVEL	IELTS	TOEFL	PTE	DUOLINGO	COURSE TO ATTEND
Direct Entry to Graduate or Undergraduate Studies	6.5 (all bands > 6.0)	86 (all sections > 20)	61 (all parts > 60)	120 (Literacy, Comprehension, and Conversation > 105; Production > 100)	Degree Program
Advanced	6	76	50	105	EAP 0140 and EAP 0141
High-Intermediate	5.5	65	45	90	EAP 0130 and EAP 0131
Intermediate	5	50	40	80	EAP 0120 and EAP 0121
Pre-Intermediate	< 4.5	< 35	< 29	< 65	EAP 0110 and EAP 0111

\*These scores are approximate and for informational purposes only. The Placement Test, taken upon arrival, will determine EAP course registration.

**Students applying to the Faculty of Health Sciences must also meet the Spoken English Language Proficiency (SELP) requirement.** Please note: completing the advanced level of the EAP program cannot be used to meet the SELP requirement.