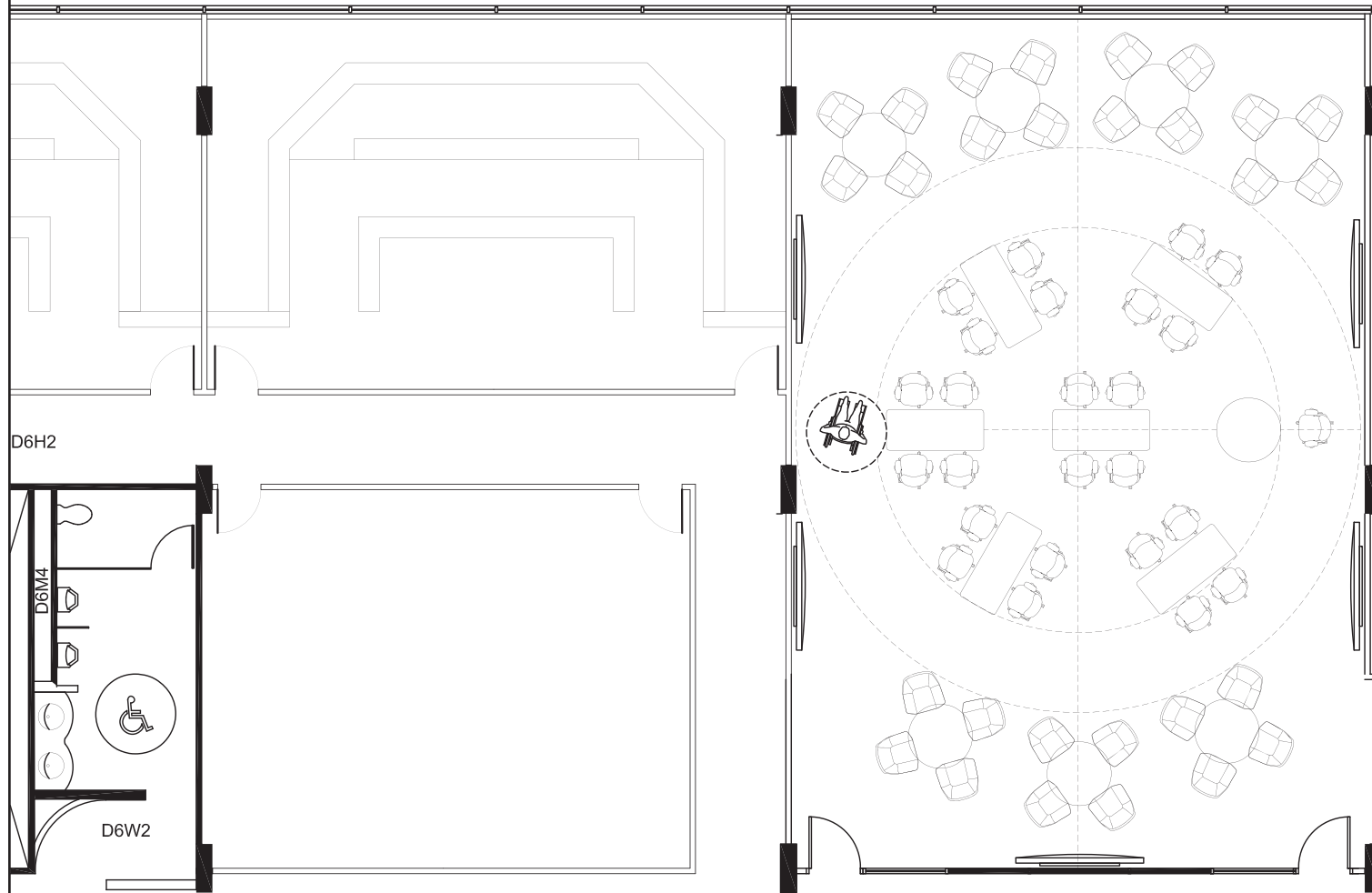
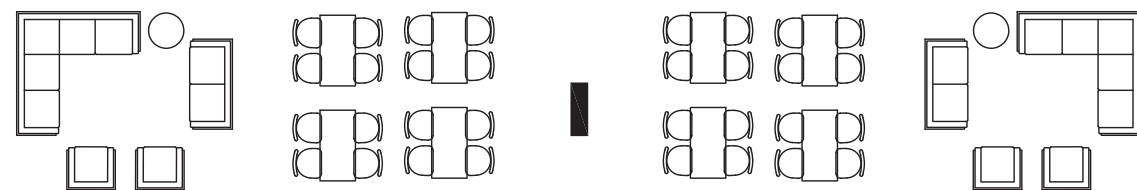


1820 SQ FT / 169 SQ M = 56 maximum
52 SEATS = 3.2 sq m / person

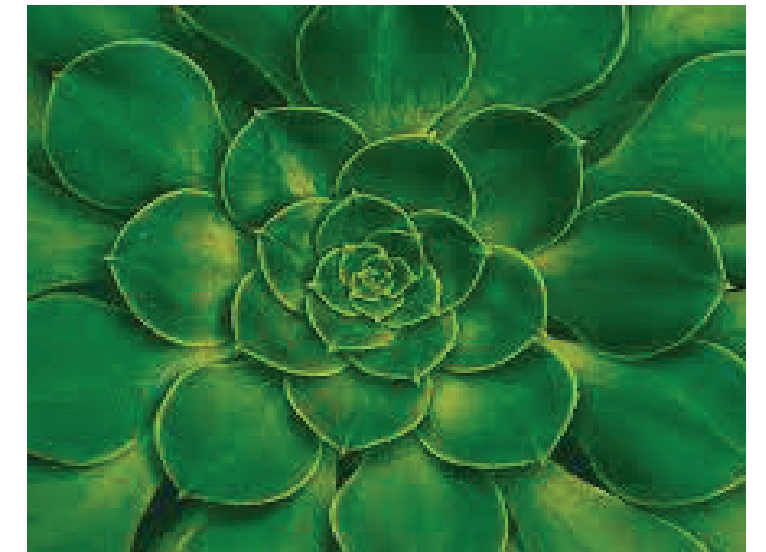
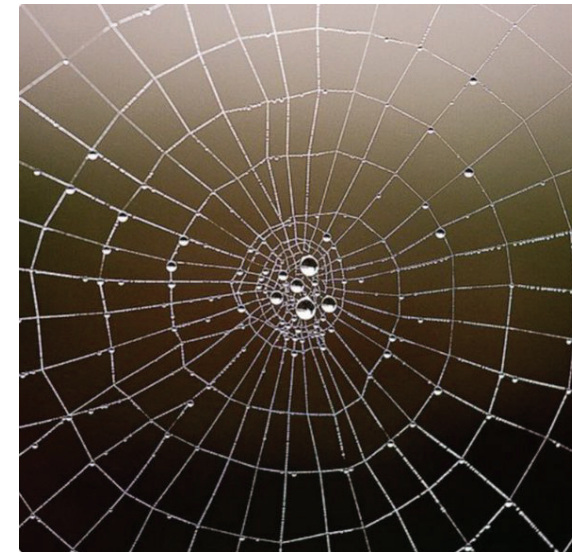


Break Out / Relax / Socialize / Gather / Collaborate / Lounge / Connect

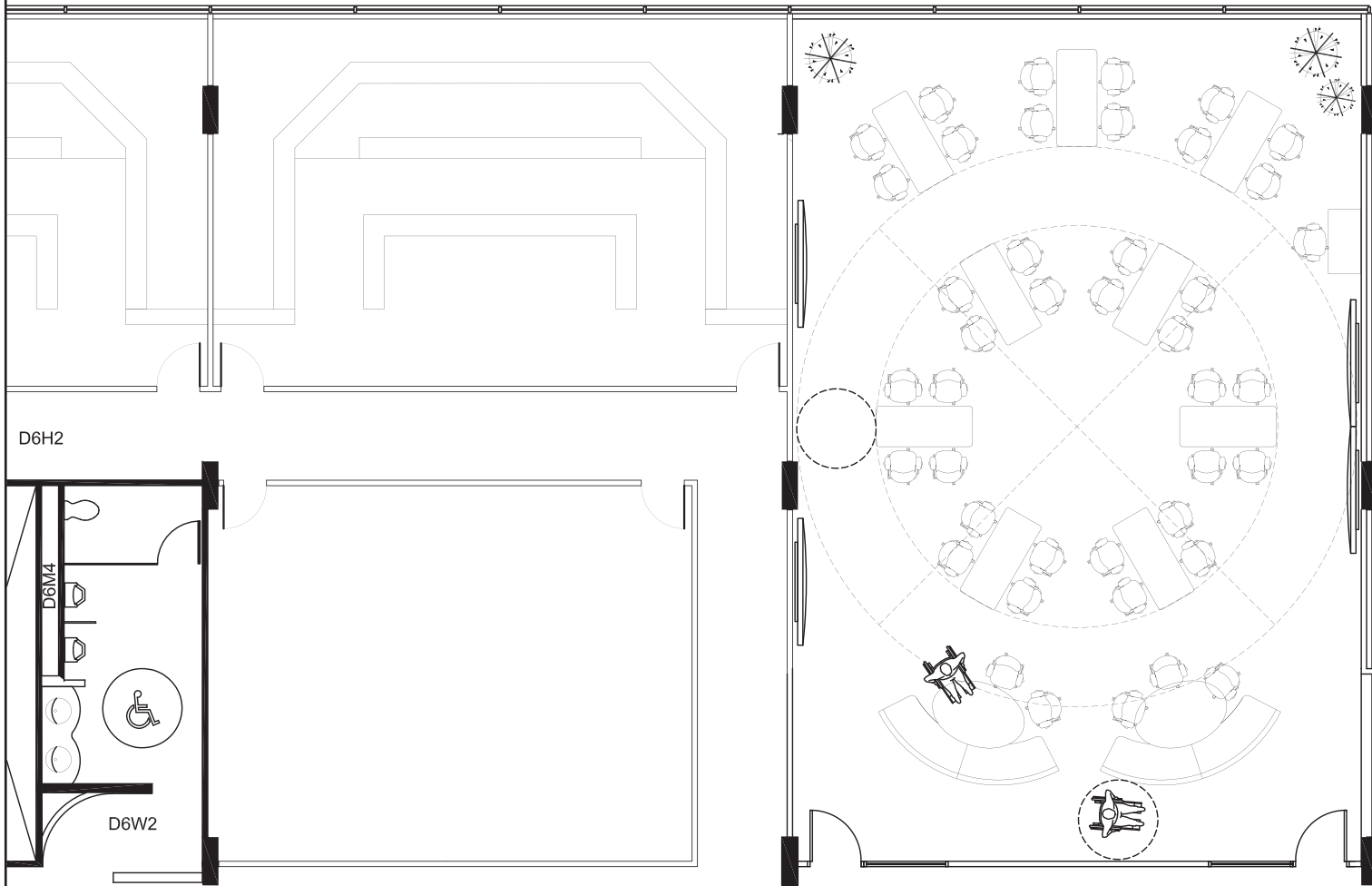


Study 1: Fixed round with “front of room” presenter within circle

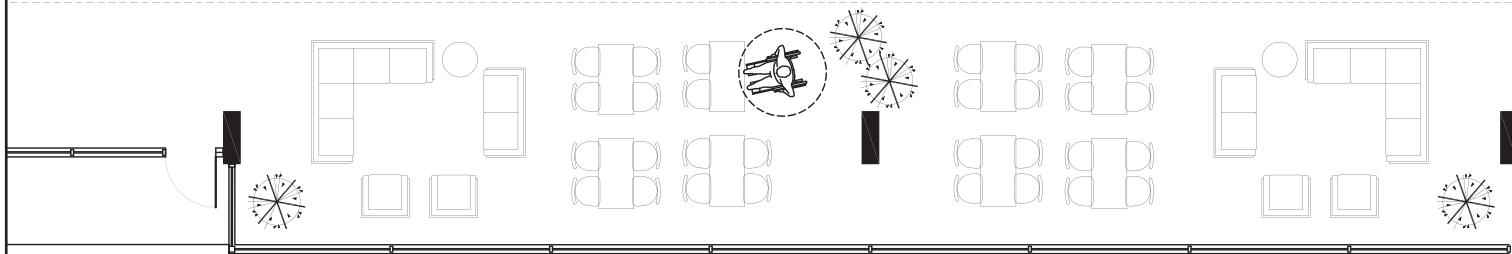
- Presenter within circle for focused learning, can move easily through space
- Room set up structured, tables stay in place for most part, some flexibility
- Breaks easily into smaller groups of 4 / 8 and 12 people. A/V to accommodate.
- Choice of round and rectangular tables, choice of seating sizes.



1820 SQ FT / 169 SQ M = 56 maximum
48 SEATS = 3.5 sq m / person



Play a game / Write / Create / Gaze / Breathe / Regroup

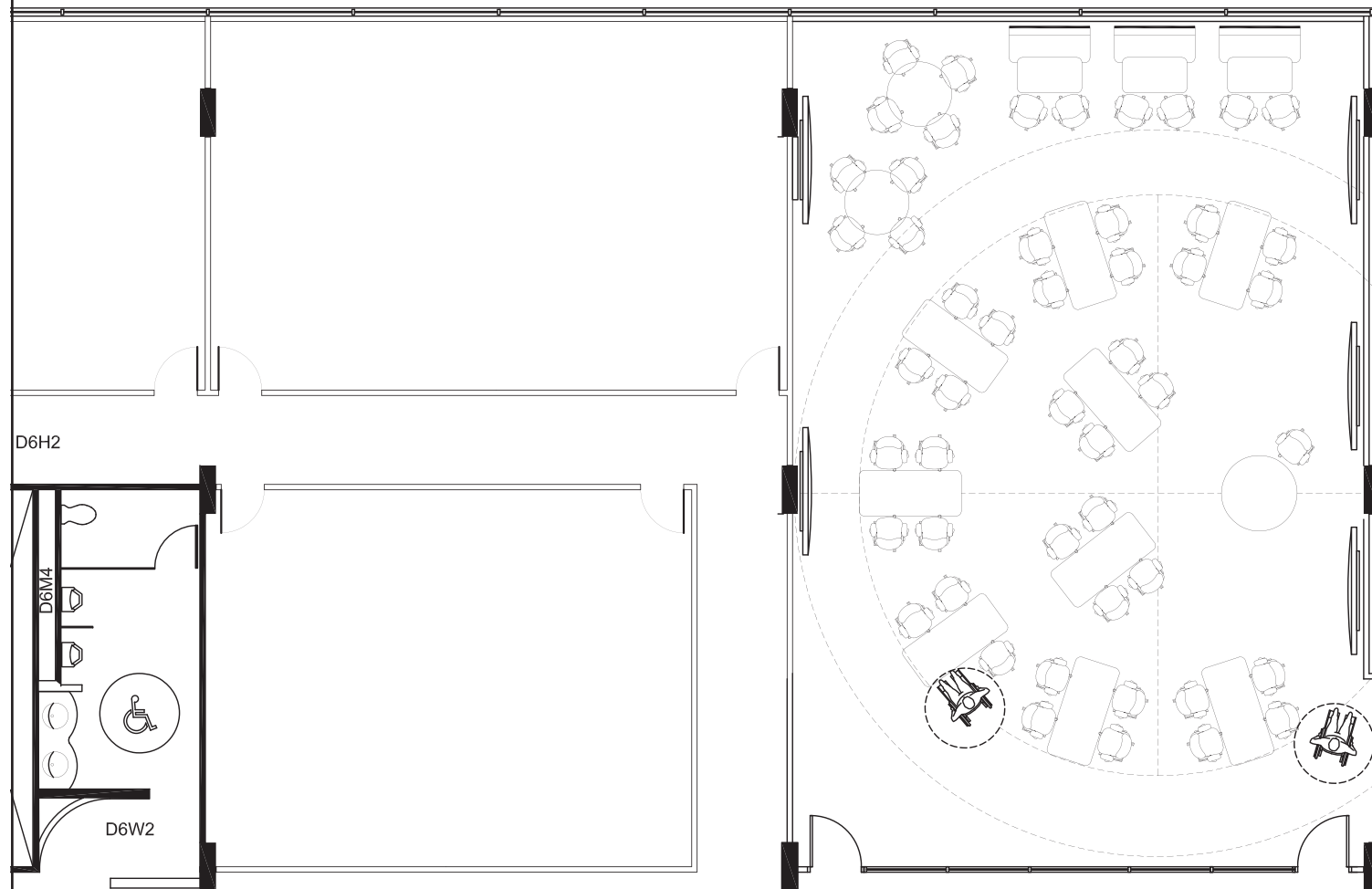


Study 2: Fixed round with presenter adjacent to learning circle

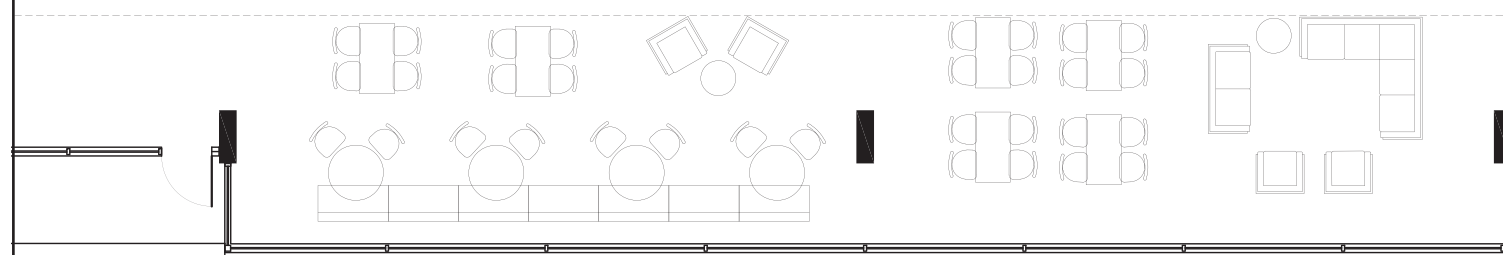
- Presenter is adjacent to create completed circle
- Room set up structured, radiates from centre point
- Walls are used for group sharing, mix of A/V and writing surfaces
- Higher back seating creates protective, cosy team configuration at entry.



1820 SQ FT / 169 SQ M = 56 maximum
56 SEATS = 3.0 sq m / person



Snack / Read / Watch / Listen / Share / Be

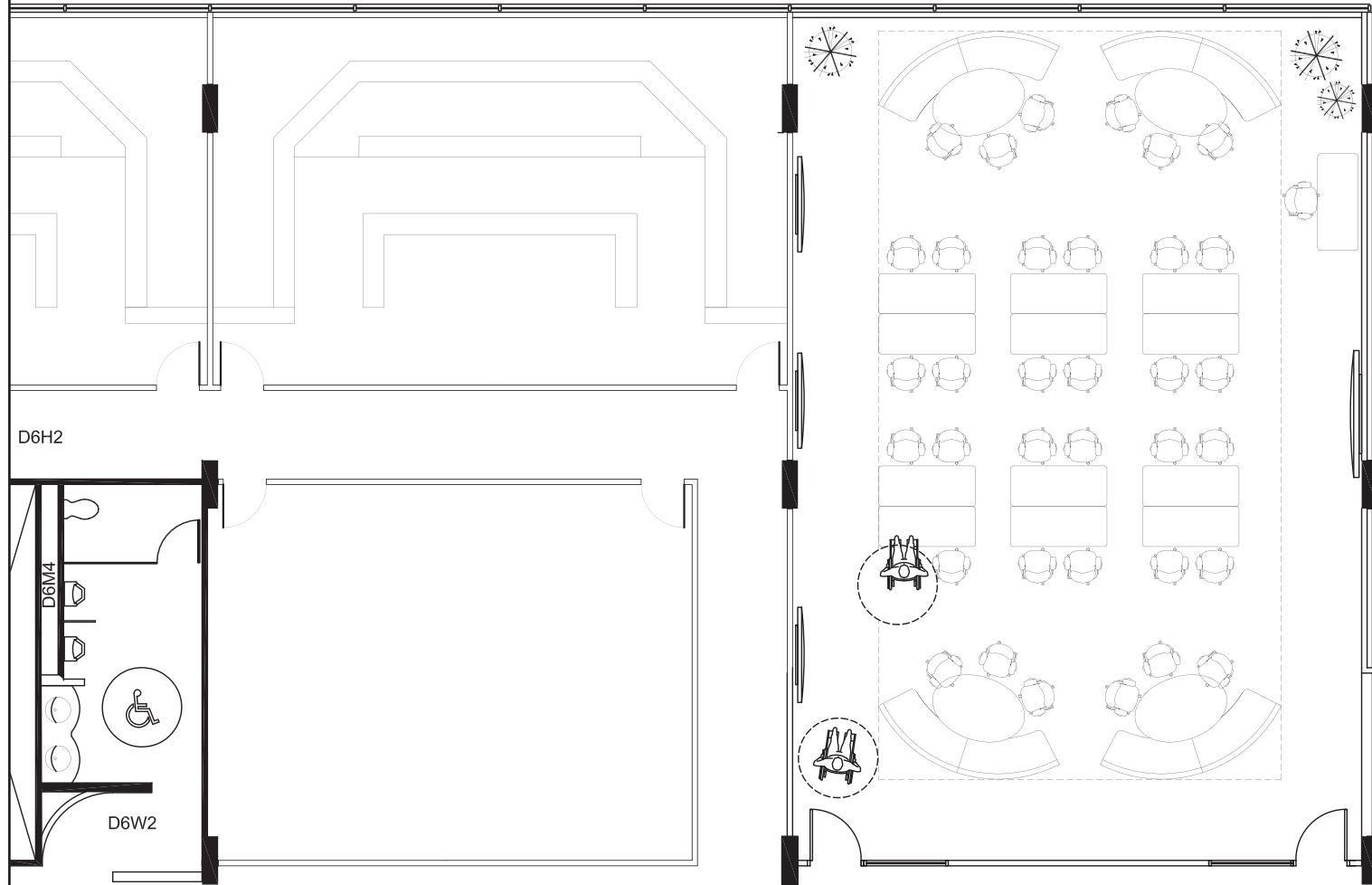


Study 3: fixed radial with front of room, break out at perimetre

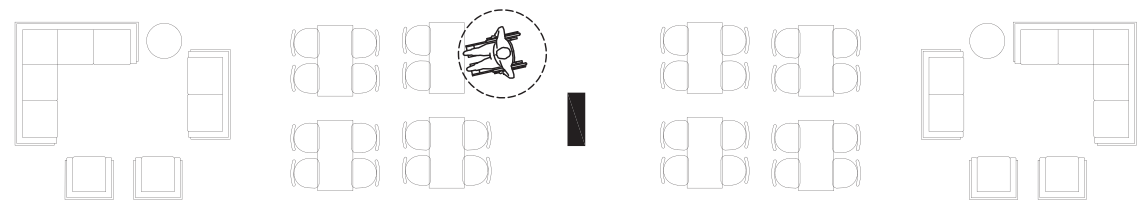
- Structured layout in radial configuration
- Presenter / Instructor is focal point, activity is forward facing.
- Top perimetre is integrated yet separate to create a break out space.
- Space breaks three quadrant for larger teams of 20 to 24.



1820 SQ FT / 169 SQ M = 56 maximum
48 SEATS = 3.5 sq m / person

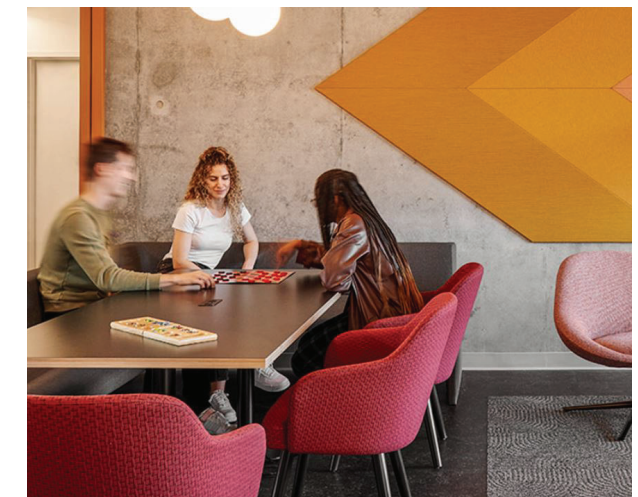
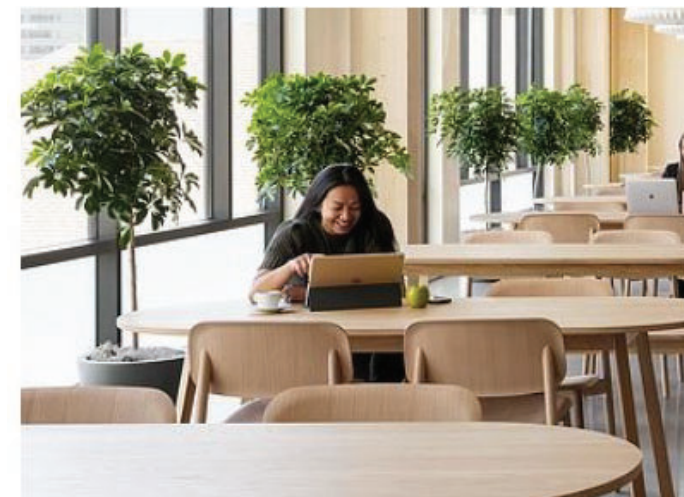
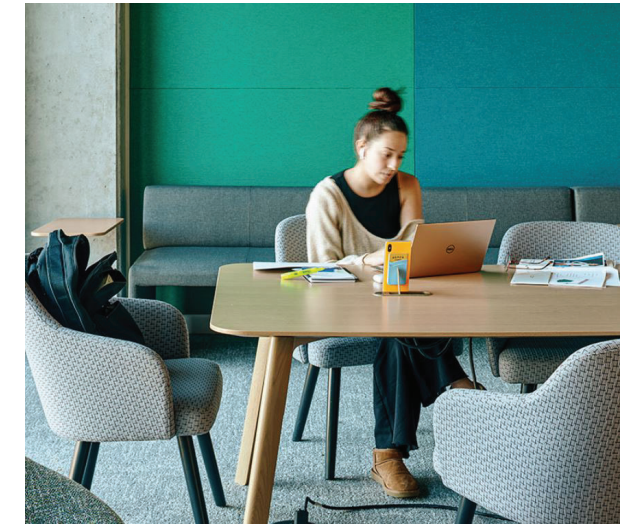


Continue with a thought / plan / discussion / idea



Study 4: Elongated Fixed Flexible

- Instructor adjacent to learning space, able to present on either left or right walls
- Curved work settings frame room, create smaller team groups of 4 to 6.
- Both long walls can be fully activated for sharing, presenting equally.
- Informal feeling, **warm materials** and textures, less sterile, nature inspired





Connecting, Learning, Social spaces:

- The adjacent UHALL corridor will be extension of classroom area, spill out zone.
- Spaces to relax, collaborate and socially connect
- Glass, transparency, and shared natural light supports open, welcoming culture
- Access to incredible coulee views creates interest and variation
- A/V integration to seamlessly support hybrid learning

